

Bo Ming Scaffolding (H.K.) Limited 寶銘棚架(香港)有限公司



3488 3860



3488 3861



bmskh.sales@gmail.com



www.bmskh.hk

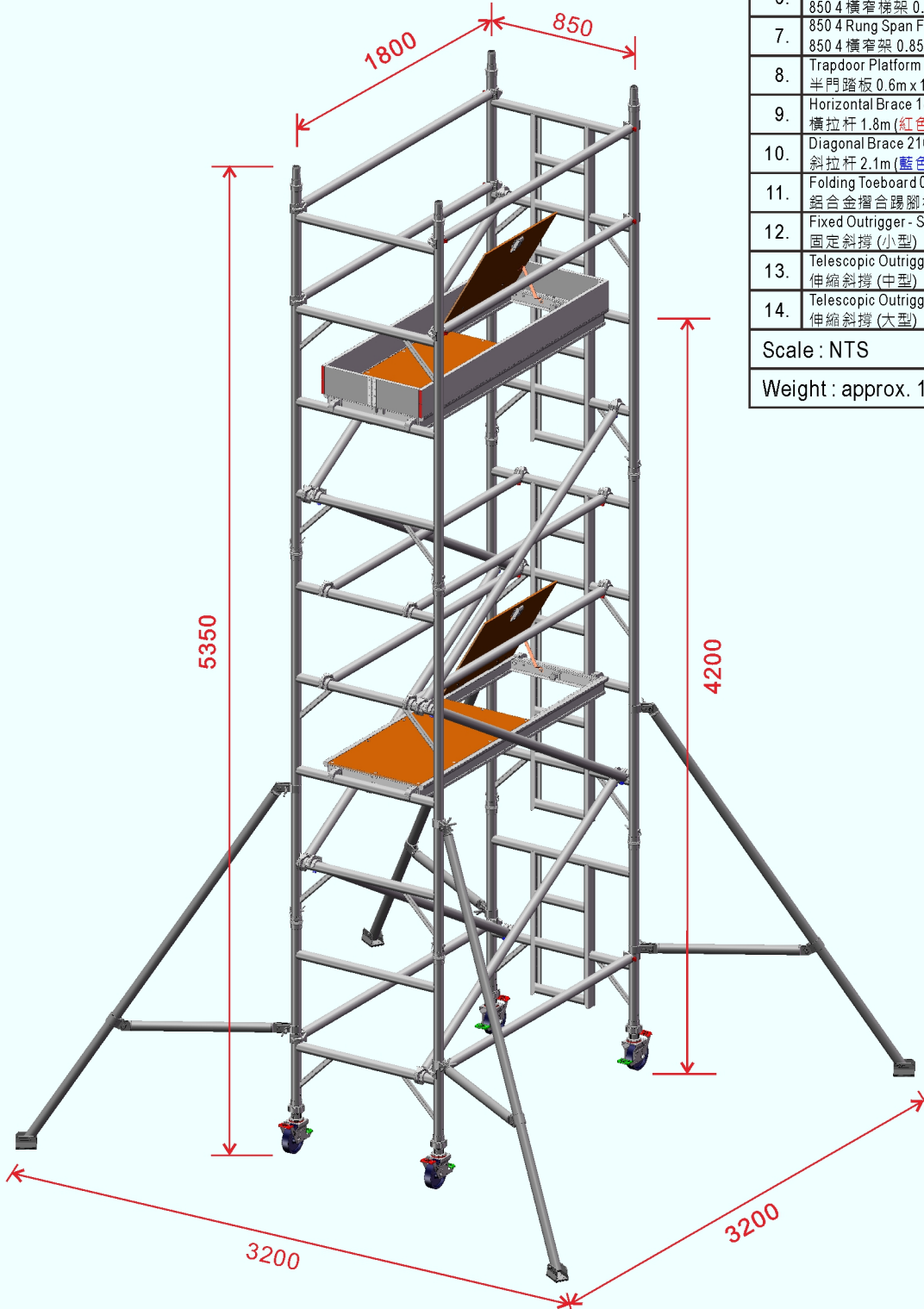


850 Mobile Aluminium Scaffold Tower

Tested and Certified to EN 1004-1:2020 (Class 3)

Tower Dimension : 0.85m(W) x 1.8m(L) x 5.35m(H)
Max. Platform Height : 4.2m, Max. Working Height : 6.2m

Maximum Working Load :
Tower - 950 kg including tower self weight
Platform - 275 kg when load uniformly distributed



Item 項目	Description 配件名稱	Qty. 數量
1.	Castor Wheel 150mm dia. W/Adj. Leg 150mm 膠輪連調節槽	4
2.	850 2 Rung Ladder Frame 0.85m x 1.0m 850 2 橫窄梯架 0.85m x 1.0m	1
3.	850 2 Rung Span Frame 0.85m x 1.0m 850 2 橫窄架 0.85m x 1.0m	1
4.	850 3 Rung Ladder Frame 0.85m x 1.5m 850 3 橫窄梯架 0.85m x 1.5m	-
5.	850 3 Rung Span Frame 0.85m x 1.5m 850 3 橫窄架 0.85m x 1.5m	-
6.	850 4 Rung Ladder Frame 0.85m x 2.0m 850 4 橫窄梯架 0.85m x 2.0m	2
7.	850 4 Rung Span Frame 0.85m x 2.0m 850 4 橫窄架 0.85m x 2.0m	2
8.	Trapdoor Platform 0.6m x 1.8m 半門踏板 0.6m x 1.8m	2
9.	Horizontal Brace 1800 (Red) 橫拉杆 1.8m (紅色)	10
10.	Diagonal Brace 2100 (Blue) 斜拉杆 2.1m (藍色)	7
11.	Folding Toeboard 0.6m x 1.8m 鋁合金摺合踢腳板	1
12.	Fixed Outrigger - Small 固定斜撐 (小型)	4
13.	Telescopic Outrigger - Medium 伸縮斜撐 (中型)	-
14.	Telescopic Outrigger - Large 伸縮斜撐 (大型)	-

Scale : NTS

Ref. : SW-5200-18

Weight : approx. 138.3kg